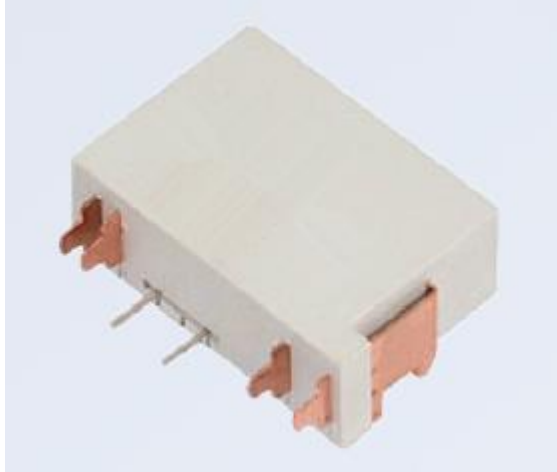


HTLW-R201 20A Magnetic Latching Relay



Product Features:

- Bistable Polarized Relay
- Highly Sensitive with Low Power Consumption
- Contact Form: Two Phase 2C, 1C, 1NO/1NC
- High Contact Reliability and Long Service Life
- Superior Dielectric Strength

Contact Loads:

Model Number	HTLW-R201
Rated Load (Resistive)	20A 30VDC / 230VAC
Max Switching Current	20A
Max Switching Voltage	30VDC / 230VAC
Max Switching Power	600W /4600VA

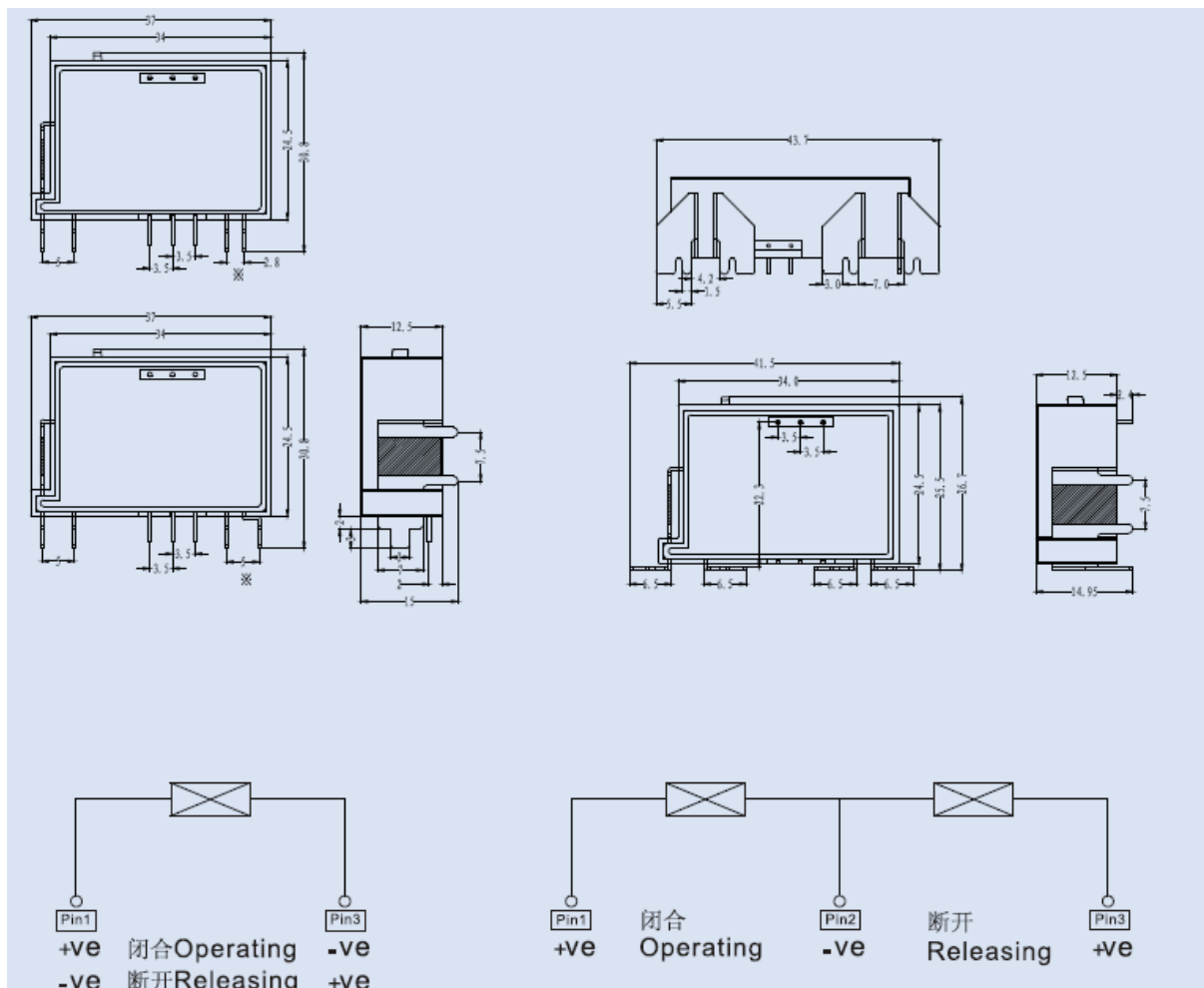
Performance Parameters:

Contact Material	Silver Alloy	
Contact Resistance	50mΩ Max.	
Operating Time	20ms Max.	
Releasing Time	20ms Max.	
Insulation Resistance	1,000MΩ Min. (DC500V)	
Dielectric Strength	Among Contacts	AC 1,000V 50/60Hz 1min
	Between Contact and Coil	AC 1,500V 50/60Hz 1min
Anti-Vibration	Durable	10-55Hz, Double Amplitude 1.5mm
	False Operation	10-55Hz, Double Amplitude 1.5mm
Anti-Impact	Durable	40g Min.
	False Operation	100g Min.
Service Life	Mechanical Life	100M
	Electrical Life	1M (20A 30VDC / 20A 230VAC)
Ambient Temperature	-40°C to +70°C	

Coil Parameters (20°C):

Rated Voltage (VDC)	Rated Current ±10%(mA)		Resistance ±10%(Ω)		Operating Voltage (Max.)	Releasing Voltage (Max.)	Pulse Width (ms)	Rated Power	
	Normal Type	Special Type	Normal Type	Special Type				Normal Type	Special Type
3	120	60	25	50	80% Rated Voltage	80% Rated Voltage	50 Min.	0.36W	0.18W
6	60	30	100	200					
9	40	20	225	450					
12	30	15	400	800					
24	15	7.5	1600	3200					
48	7.5	3.8	6400	12800					

Outline Dimensions and Connection Diagram (unit: mm):



NOTE:

- Unmarked Dimension Tolerances:
 - <1mm: ±0.2mm
 - 1-5mm: ±0.3mm
 - >5mm: ±0.5mm
- Mounting Hole Size Tolerance: ±0.4mm